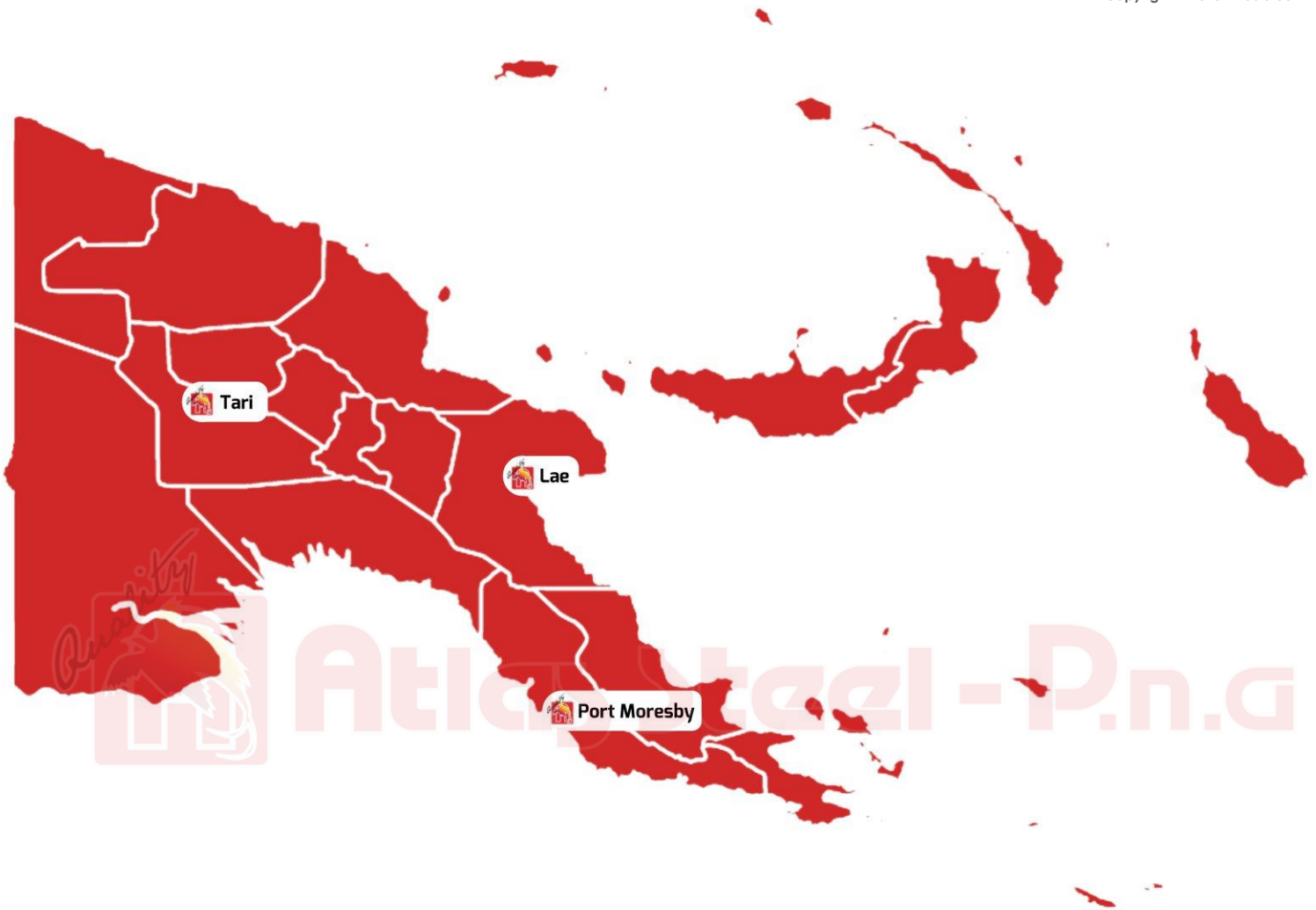




**Atlas Steel - P.n.g**

# CAPACITY MANUAL

*By supporting Atlas Steel PNG, you're supporting PNG*



**Lae – 472 1104**

[sales.lae@atlassteelpng.com.pg](mailto:sales.lae@atlassteelpng.com.pg)





**Pom – 321 1233**

[sales.pom@atlassteelpng.com.pg](mailto:sales.pom@atlassteelpng.com.pg)

**Tari – 7414 8816**

[manager.tari@atlassteelpng.com.pg](mailto:manager.tari@atlassteelpng.com.pg)

# Index

Index	...	1		Additional Services	...	33
About us	...	2		Project Photos	...	34
Corporate Social Responsibility	...	3		Display Centres	...	36
Vision & Mission	...	4		Product Photos	...	37
HS&E Policy	...	5		Major Clients	...	41
Capabilities	...	6				
Products & Material Standards	...	8				
<b>Building Materials</b>	...	9				
Reinforcing Bar & Mesh	...	12				
Fabrication	...	14				
Kliplok	...	16				
Bondek	...	18				
<b>Kit Homes</b>	...	19				
40 m <sup>2</sup> House	...	21				
60 m <sup>2</sup> House	...	22				
90 m <sup>2</sup> House	...	23				
Executive & Duplex Houses	...	24				
<b>Fencing</b>	...	25				
<b>Steel Buildings</b>	...	29				
Modular Range	...	32				

# | About Us

Atlas Steel PNG is a member of the Kenmore Group of Companies that diversifies in Industrial, Property, Automotive, Transport, Agriculture and Finance related businesses and employs over 1,500 staff. We have been actively contributing to Papua New Guinea's infrastructure development since 1973 and are recognized as the largest steel manufacturer and distributor in the country.

Our factories and sales offices are located strategically in Lae, Port Moresby and Tari – which enables us to meet the local demand and supply top-quality steel products quickly throughout PNG.

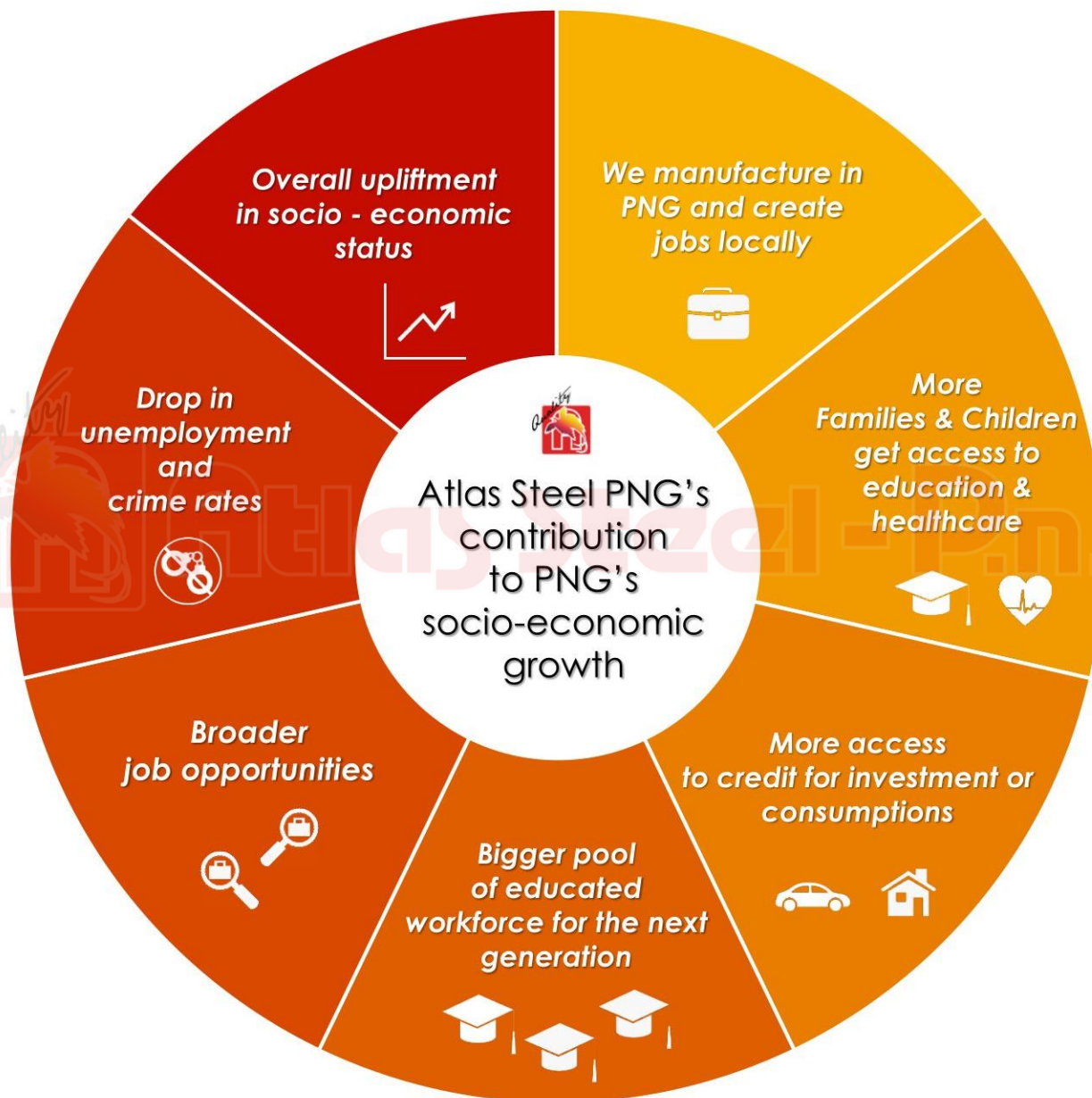
From humble beginnings as suppliers of building construction materials, Atlas Steel PNG is today also recognized as a reliable solution provider for top-quality kit-homes, fencing products and steel building systems.

At Atlas Steel PNG we are committed to keeping our reputation as your **Local one-stop shop for Quality Steel Products & Buildings.**



# Corporate Social

Responsibility



# Vision and Mission

## Vision



To be PNG's most reliable and preferred local One-stop Shop for Quality steel components and building structures.

## Mission



To supply high-quality steel products, utilizing highest levels of business ethics and supporting the 'Made in PNG' concept.

# Health, Safety & Environment

## Policy

**Atlas Steel PNG believes in providing staff, clients, partners, subcontractors, suppliers and visitors with a healthy and safe environment.**



### We are committed to:

- Make our workplace, processes, practices, products and services safe for health and the environment.
- Create Safe working conditions and reduce incidents, with the ultimate objective of preventing workplace injuries and illness.
- Explore technologies across entire the operations to minimize impact on the environment.

### To meet our commitment, we:

- Give top priority to Health, Safety and the Environment (HSE) across the entire business operations and product delivery.
- Communicate, train and motivate employees to achieve our HSE objectives.
- Make our workplace free from incidents and occupational illnesses.
- Practice the principle of prevention.
- Regularly audit our workplaces
- Manage workplace risks in accordance with PNG legislation and other requirements

**Atlas Steel PNG** has effective systems and controls in place to ensure that our business and supply chain are not party to **Modern Slavery** and associated human rights violations.

# | Capabilities

Atlas Steel PNG is the largest supplier of top-quality structural steel, fencing systems, reinforcing steel (bars & mesh), merchant steel, poles, pipes & plates, roll-formed products and nails & screws in Papua New Guinea.

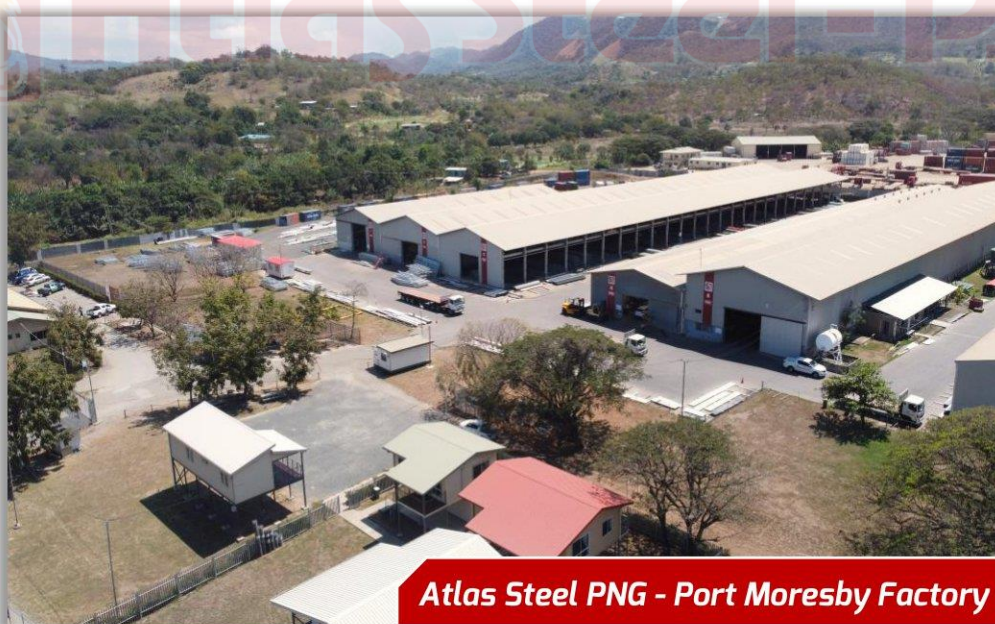
We are also the largest suppliers of locally manufactured pre-fabricated metal buildings, kit-houses and modular systems that are used across Papua New Guinea for houses, dormitories, school buildings, canteens, car-ports, garages, libraries, showrooms, factories, work-shops, sheds and in general any residential, commercial or industrial steel structure.

We employ over 500 staff and operate from state-of-the-art factories located in Lae, Port Moresby and Tari - which makes us logistically accessible across the country.

The company has an annual turnover of K 150 million and we hold an average inventory of between 4 to 6 months of production capacity in order to ensure supply continuity to our clients.

In the event of any surge in business intake we have the capability to deploy further financial resources and increase our inventory & production capacities to suit the project/client's schedules.





# Product & Material

## Standards

Atlas Steel PNG offers 4 products to the PNG market:

- Building materials
- Kit-homes
- Fencing systems
- Steel buildings

All materials conform to relevant AS / NZ material standards. Our building designs conform to PNGS IOOI: Parts 1 to 4.

All steel supplied by Atlas Steel PNG is sourced from reputable suppliers and is backed with mill-test certificates.

We also supply steel conforming to other international specifications and standards, when required.



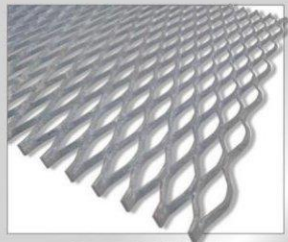




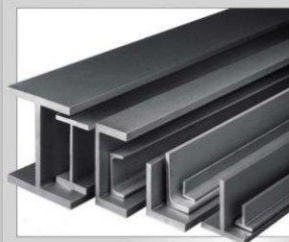


Atlas Steel PNG is considered the most reliable supplier of top-quality construction materials across Papua New Guinea and are proud to be associated with all major projects and companies around the country for over 35 years.

We offer materials under the following product categories:



**Expanded Metal**



**Merchant Steel**



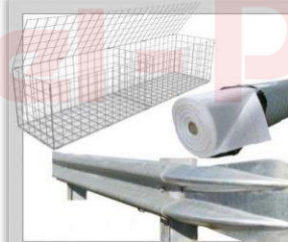
**Pipes & Hollow Sections**



**Nails and Screws**



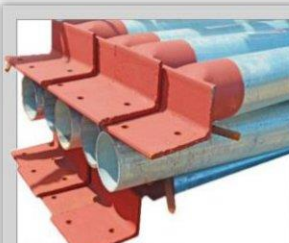
**Reinforcing bar & Mesh**



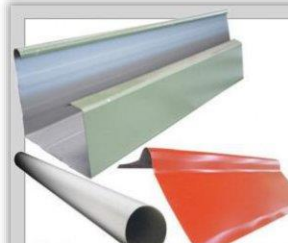
**Road Products**



**Roll Formed Products**



**House Stumps**



**Hollowware**



- **Expanded Metals**

(grid mesh; louvre mesh; gothic mesh and gratings.)

- **Merchant Steel**

(angles; bars; universal beams & columns; welded beams & columns; tapered flange beams; tapered & parallel flange channels and plates)

- **Pipes & Hollow-sections**

(square & rectangular hollow section, galvanized pipes, API standard SCH40 & SCH80 pipes.)

- **Nails & Screws**

- **Reinforcing bar & Mesh**

(deformed bars, complex bending services, prefabricated cages, standard size reinforcing mesh and services for complex bar bending and non-standard reinforcing mesh.)

- **Road products**

(gabion baskets; guard rails & accessories; culverts and geotextile fabrics.)

- **Roll-formed products**

(C and Z shape purlins; fascia purlins; roof and wall panels in different profiles, thickness and colours and floor decking panels.)

- **House-stumps**

(house stumps; column posts & handrails for verandah and stairs; stair stringers and other connection members & accessories.)

- **Hollowware**

(ridge caps; rainwater gutters, downpipes, flashings, trims & related accessories; water containers; water tank accessories; garbage bins and wheelbarrows)

# Reinforcing

## Bar & Mesh

For over 30 years we have been supplying reinforcing steel and mesh across PNG for simple standalone residences right up to complex high value residential, commercial, industrial, mining and infrastructure projects.

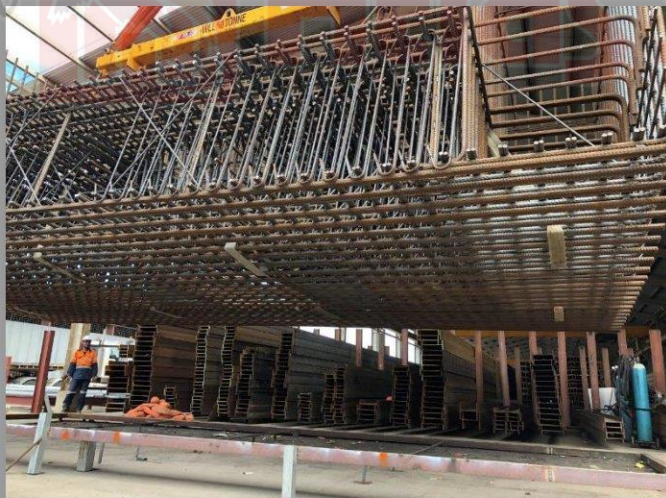
Atlas Steel PNG stock Grade 500 N reinforcing steel in a broad range of diameters and lengths as well as Grade 300 E and Grade 500 E reinforcing steel for projects that require seismic structural designs.

Our state-of-the-art processing facilities in Lae and Port Moresby provide scheduling, cutting, bending as well as assembly services for prefabricated piling and foundation cages. We also offer on-site fabrication and tying services for major projects across the country.

All our reinforcement bars conform to AS/NZS 4671:2019. They are sourced from ACRS approved mills and come with full mill-test certificates. We can also arrange for material confirming to other international standards & specifications.

Our list of major projects includes OK Tedi Crusher project (8,000 tons), Exxon LNG project (5,000 tons), POM airport flyover (2,000 tons), APEC Haus piling works (500 tons) and almost every landmark high-rise building in Lae and Port Moresby.





# Steel Fabrication

## Services

Atlas Steel PNG provides a full range of services from sourcing through to fabrication, shot-blasting, painting and delivery for medium-heavy steel structures, plate and pipe works. We are the one-stop-shop for your manufacturing and welding needs and pride ourselves for the quality of work and fast turn-around time.

Our factories in Lae and Port Moresby are equipped with state-of-the-art machinery and technical expertise to service projects in the residential, commercial, industrial, transport, automotive oil and gas as well as mining sector. We can pretty much fabricate anything and our team members work closely with clients to understand the specific needs and propose product solutions.

Every member of our team is well experienced in their respective works and adheres to Atlas Steel PNG's Health, Safety and Environment policy.





# Kliplok Roofing

406 & 700

Kliplok is a concealed fixed cladding system which provides a watertight and leak proof roofing solution for your structures. It is a unique roofing method where the roof panel is fixed on specially designed clips which can withhold high wind pressure. Atlas Steel PNG offers on-site mobile roll-forming service for projects that require uninterrupted panel lengths and low roof pitch.

Available in thicknesses ranging from 0.4mm to 0.55mm and cover widths of 406mm or 706mm, these high tensile roof panels come in a variety of colors to choose from.





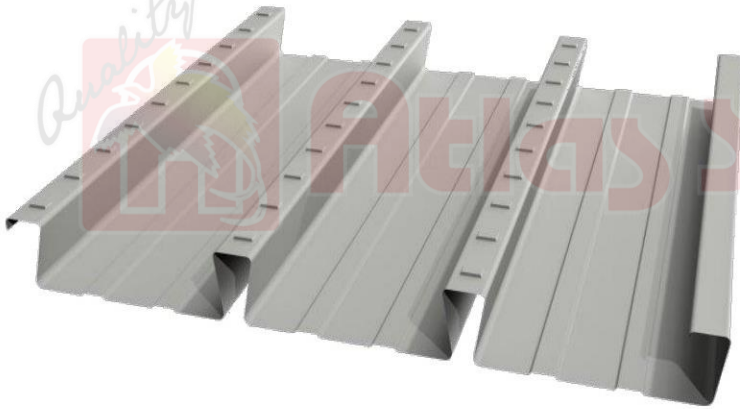


# Bondek

406 & 700

Bondek formwork system is one of the most preferred formwork methods to suspend concrete floors. It helps speed up the installation and construction process - a desired advantage for high-rise buildings.

Since its introduction to the market in 2010, Atlas Steel PNG has supplied this metal formwork system to many of the newest landmark buildings in PNG.







***Atlas Steel Housing***, is a proprietary kit-home system fully designed, fabricated and supplied by Atlas Steel PNG from our factories located both in Lae and Port Moresby. Having been in the PNG housing market for decades, Atlas Steel PNG understands the local needs and have invested considerable time and resources to come up with suitable layouts and designs that amalgamate **quality** and style with affordable pricing.

Each *Atlas Steel House* is designed in accordance with AS/NZS 4600 and/or Papua New Guinea Standards PNGS 1001: Parts 1 to 4 and relevant provisions of PNGS 1002, 1003 and 1004. All designs and drawings are certified by Professional Engineers registered with the PNG Institute of Engineers.

Steel is strong, fire resistant for longer and remains straight & termite free, thus giving your houses a much longer and maintenance free life. *Atlas House* kits come complete with timber doors, aluminum windows, 18mm thick CFC floor boards, 10mm thick plaster boards for interior walls & ceiling lining, 25mm thick treated hardwood timber for verandah decking, roof sisalation and wire mesh, steel stairs with handrails, all connection bolts and fasteners, quality kitchen cabinetry, electrical & plumbing fittings and a Dulux paint kit for interior walls.

In addition to standard layouts Atlas Steel PNG also offers tailored solutions to clients, to build their dream homes. For all technical consultations and quotations contact our nearest branch office.

Every single *Atlas House* is proudly produced in PNG.



# HS40

High-Set Pre-Fabricated Accommodation



**DIMENSIONS**  
8.4m x 7.0m



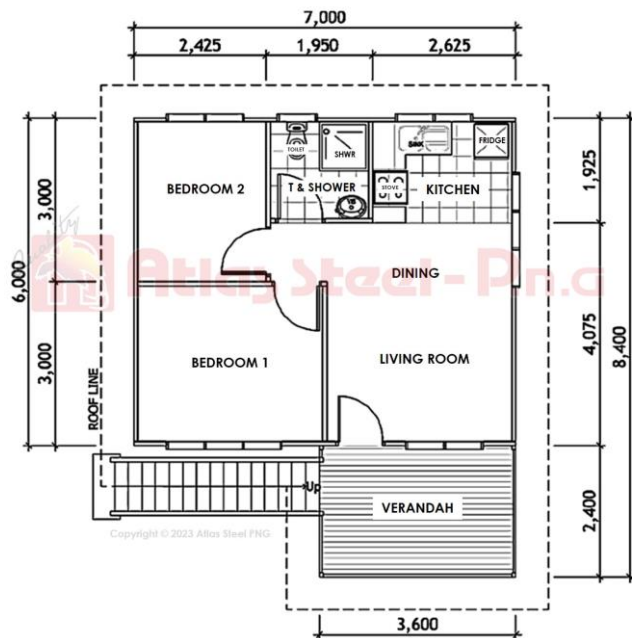
**AREA**  
40m<sup>2</sup>



**BED**  
3



**BATH**  
1



Front



Left



Right



Back





# HS60

High-Set Pre-Fabricated Accommodation



**DIMENSIONS**  
10.2m x 9.6m



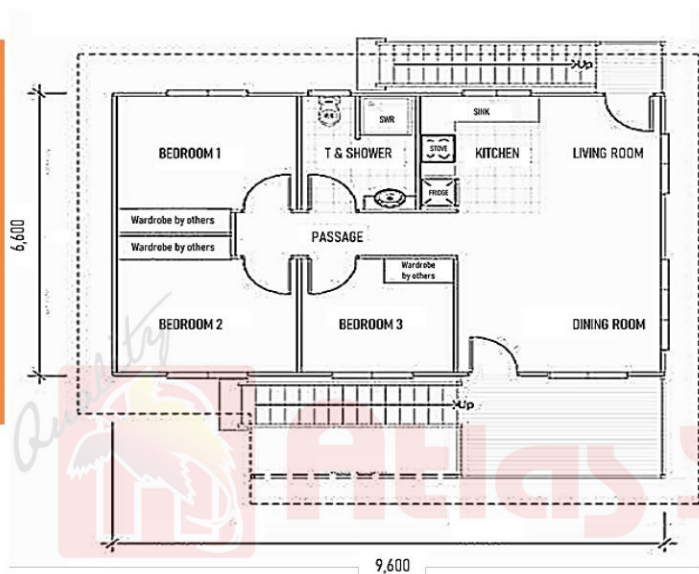
**AREA**  
60m<sup>2</sup>



**BED**  
4



**BATH**  
1



Front



Left



Right



Back

↑ Bedroom  
↓ Downstairs

# HS90

High-Set Pre-Fabricated Accommodation



**DIMENSIONS**  
10.5m x 10.2m



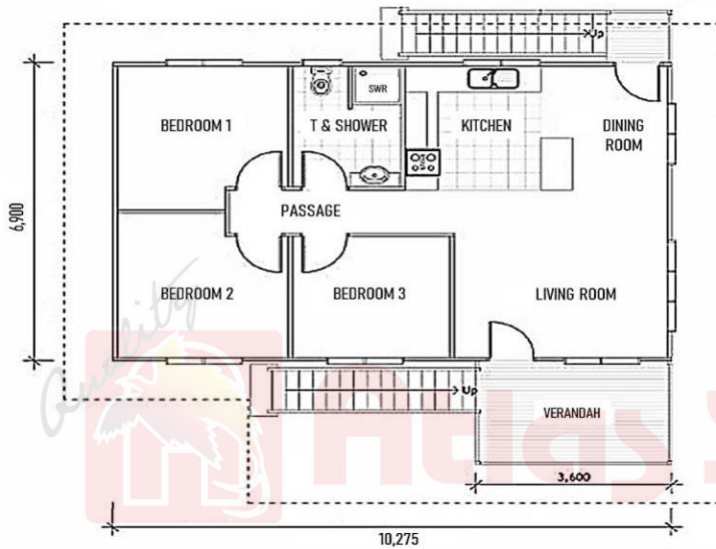
**AREA**  
90m<sup>2</sup>



**BED**  
5



**BATH**  
1



Front



Left



Right



Back

↑ Bedroom +  
Toilet & Shower  
Downstairs

# Executive

High-Set Pre-Fabricated Accommodation



DIMENSIONS  
11.4m x 14.6m



AREA  
120m<sup>2</sup>



BED  
4



BATH  
1



# Duplex

High-Set Pre-Fabricated Accommodation



DIMENSIONS  
BASED ON  
YOUR  
CHOICE



AREA  
BASED ON  
YOUR  
CHOICE



BED  
UP TO 5  
PER HOUSE



BATH  
UP TO 2  
PER HOUSE







**Atlas Steel**  
**FENCING**



All Atlas Steel Fencing conforms to AS 1725/ BS 1722 or equivalent and our standard supply includes minimum Grade 250 steel with up to 600gm/sqm galvanized coating. We also offer steel in other grades and finishes to suit different desired applications. All Atlas Steel Fencing systems come complete with gate posts and related accessories.

### **Chainmesh Fencing:**

This fencing offers strength, durability and affordability and is the preferred choice for small, medium or large enclosures. Chainmesh rolls are offered in galvanized or PVC coated steel wire in different heights and all posts are built from galvanized steel.

### **Picket Fencing:**

This is a value-for-money fencing system popular for securing public facilities, commercial and industrial properties as well as schools and sports complexes.

Fabricated using square hollow sections (SHS) this fencing is offered in different heights and either galvanized or primed finishes.

### **Palisade Fencing:**

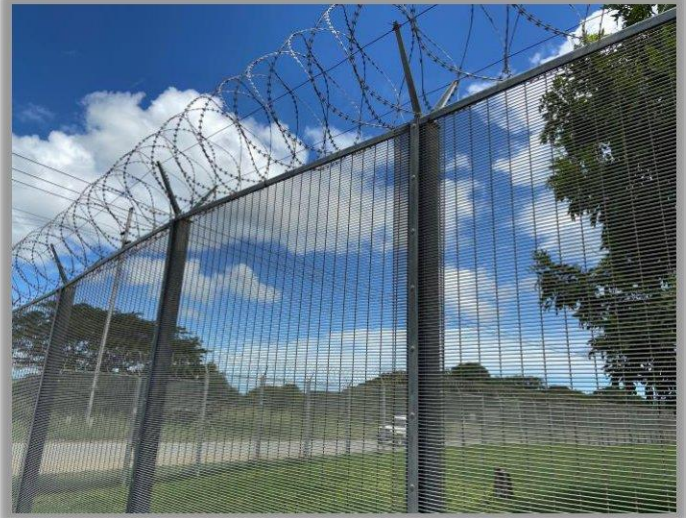
This is the most popular and highly effective security fencing system and recommended for securing public work facilities, commercial and industrial establishments, sports facilities, defense sites and transport facilities. Comprising of fencing pales, posts and rails this fencing is offered with a bare metal thickness of 2.5mm and 600 gm/sqm hot-dip galvanized coating to withstand extreme weather conditions including corrosion. The fencing comes with self-breaking security nuts and an option of adding razor wire for additional security to the perimeters.

### **358 High Security Fencing:**

This is the strongest and top-of-the-line security solution and comprises of a high-tensile 358 security mesh fixed between heavy-duty steel posts to create an extremely difficult barrier to penetrate. This type of fencing is used to secure airports, Embassies & diplomatic mission posts, high end accommodation, high-risk industrial sites, detention centers and prisons. 358 High Security fencing also comes with self-breaking security nuts and an option of adding razor wire for additional security to your perimeters.

We also offer installation services of fencing projects in POM.

# High Security Fencing



## Palisade Fencing

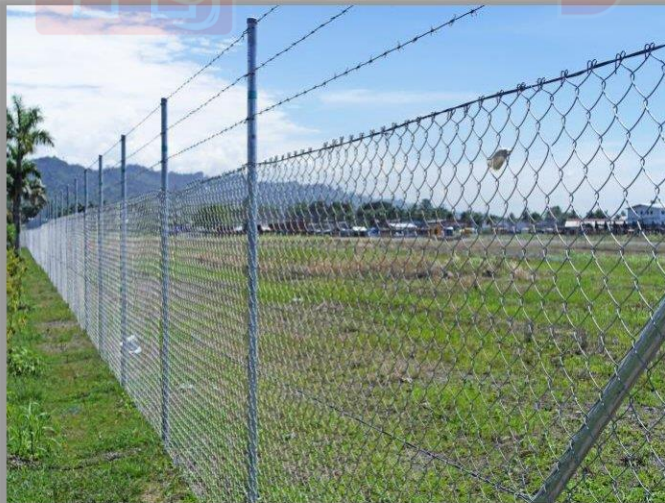




## Picket Fencing



## Chainmesh Fencing







**Atlas Steel**  
**BUILDINGS**



Atlas Steel PNG's Buildings Division is the largest supplier of **top quality, locally manufactured** steel buildings that are used across PNG for dormitories, school-buildings, canteens, car-ports, garages, libraries, showrooms, factories, workshops, warehouses, sheds and any residential, commercial or industrial steel structure.

Our factories in Lae and Port Moresby are equipped to design, fabricate and supply steel buildings all across Papua New Guinea.

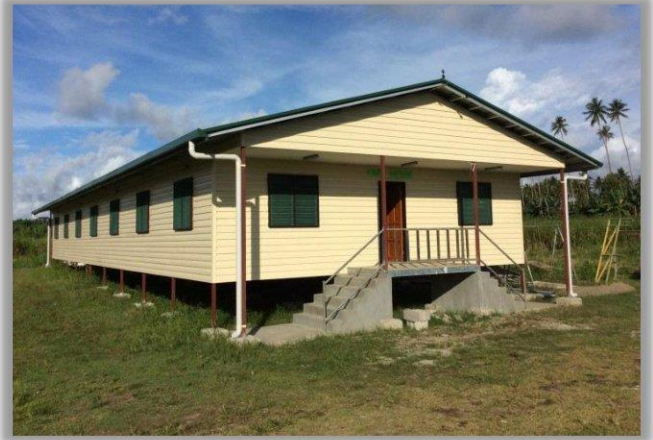
All **Atlas Steel Buildings** are designed in accordance with AS/NZS 4600 and/or Papua New Guinea Standards PNGS 1001: Parts 1 to 4 and relevant provisions of PNGS 1002, 1003 and 1004. All designs and drawings are also certified by Professional Engineers registered with the PNG Institute of Engineers.

Atlas Steel PNG offers clients 'Pre-fabricated buildings' and 'Modular Building systems' to choose from depending on the project location and requirements.



## Pre-fabricated buildings:

These are buildings that are designed, fabricated and supplied in kit-form to be assembled completely at site. They come complete with all material including connection bolts & nuts and construction drawings to enable the contractor to manage installation works on site.



## Modular Buildings:

These are fully fitted buildings constructed in a controlled factory environment – in sections or modules. These modules are then transported to the construction site for final assembly & connections to utilities.



# Modular Range

These buildings are a popular choice for accommodation, site office, educational buildings, etc. The most obvious benefit in addition to quality, and quick delivery is the flexibility to move the building wherever and whenever you desire.



**Modular Office for 4 Staff**



**Modular Office for 2 Staff**



**Executive Modular  
Accommodation**



**Modular Guard Haus**



# Additional Services

## Technical Consultation:

Atlas Steel PNG offers free technical consultation to our valuable clients across all products that we supply. This service can be availed by contacting our friendly staff in our branch offices or via phone and emails.

## Site Delivery:

For projects located within the city boundaries, Atlas Steel PNG offers free delivery of material from our branches in Lae, Port Moresby and Tari to the job-site.





## Supply & Install:

Depending on your project location, Atlas Steel PNG offers Project Management & Construction Services for steel structures and kit-homes supplied by us.

All projects installed by Atlas Steel PNG come with a 6 months warranty.

# Project Photos









# | Display Centres

For clients to have a first-hand experience of Atlas Steel houses, we have built elaborate Display Centres at Cameron Road, Waigani and Idler's Bay Road, Baruni.

These display centres showcase a variety of kit-type and modular-type houses along with fencing systems and other products to choose from.

Our display centres are open from 8.00AM to 4.30PM on weekdays, from 8.00AM to 11.30AM on Saturdays and 11.00AM to 3.00PM on Sundays.

To make an appointment for viewing and free technical consultation, call us at (+675) 321 1233 or email us at [sales.pom@atlassteelpng.com.pg](mailto:sales.pom@atlassteelpng.com.pg).



Baruni



Waigani



# Product Photos

















# Major Clients





The information contained in this document is intended solely for the use of the individual to whom it is addressed and others authorized to receive it. If you are not the intended receipt, you are hereby notified that any disclosure, copying, distribution or taking any action in reliance on the contents of this document is strictly prohibited and may be unlawful.

Atlas Steel PNG therefore does not accept liability for any errors or omissions in the contents of this document, which arise. If you have received this in error, please notify us immediately by using the contact details inside.

Copyright © 2024 Atlas Steel PNG

