



# Steel Fabrication CATALOGUE

*By supporting Atlas Steel PNG, you're supporting PNG*



**Lae – 472 1104**

[sales.lae@atlassteelpng.com.pg](mailto:sales.lae@atlassteelpng.com.pg)

**Pom – 321 1233**

[sales.pom@atlassteelpng.com.pg](mailto:sales.pom@atlassteelpng.com.pg)

**Tari – 7414 8816**

[manager.tari@atlassteelpng.com.pg](mailto:manager.tari@atlassteelpng.com.pg)

01 Introduction

02 Areas of  
Expertise

03 Reinforcing  
Fabrication

05 Structural Steel  
Fabrication

07 Light Fabrication  
Works

09 Truck Bodies  
& Automotive

11 Grit  
Blasting

13 Surface  
Protection

15 Security  
Screening

17 Fencing  
Fabrication

19 Special  
Fencing

22 Health, Safety &  
Environmental  
Policy

# Introduction

Atlas Steel PNG can now offer Structural steel fabrication to our customers.

Realizing the growing need for in country quality fabrication work we have opened 1 x new dedicated fabrication facility in Port Moresby and we are busy constructing a similar facility at our branch in Lae.

These additional facilities value add to the large range of structural sections and steel plates that we commonly sell to the market.

Our fabrication team can work with you from concept to completion, regardless of the location or complexity of the job. Our workshop is equipped for welding carbon steel, stainless steel, aluminum, cast iron and alloys. Facilities are available for plate and beam punching, light plate folding and section cutting and our workshops are equipped with 10T overhead gantry cranes.

Our welders are skilled to weld to AS1554 SP, and we have the capacity to weld to international standards such as ASM IX, API650 and API 653.





# Area of Expertise

We Specialize In:

- Structural steel fabrication
- Light fabrication works such as stairs and balustrading
- Welding to AS1554 SP
- Truck Bodies.
- PMV Canopies
- Security screening
- Fencing fabrication
- Machining services
- Reinforcing Fabrication
- Grit-Blasting to NACE #1 – White Metal
- Painting to AS/NZ 2312:2002

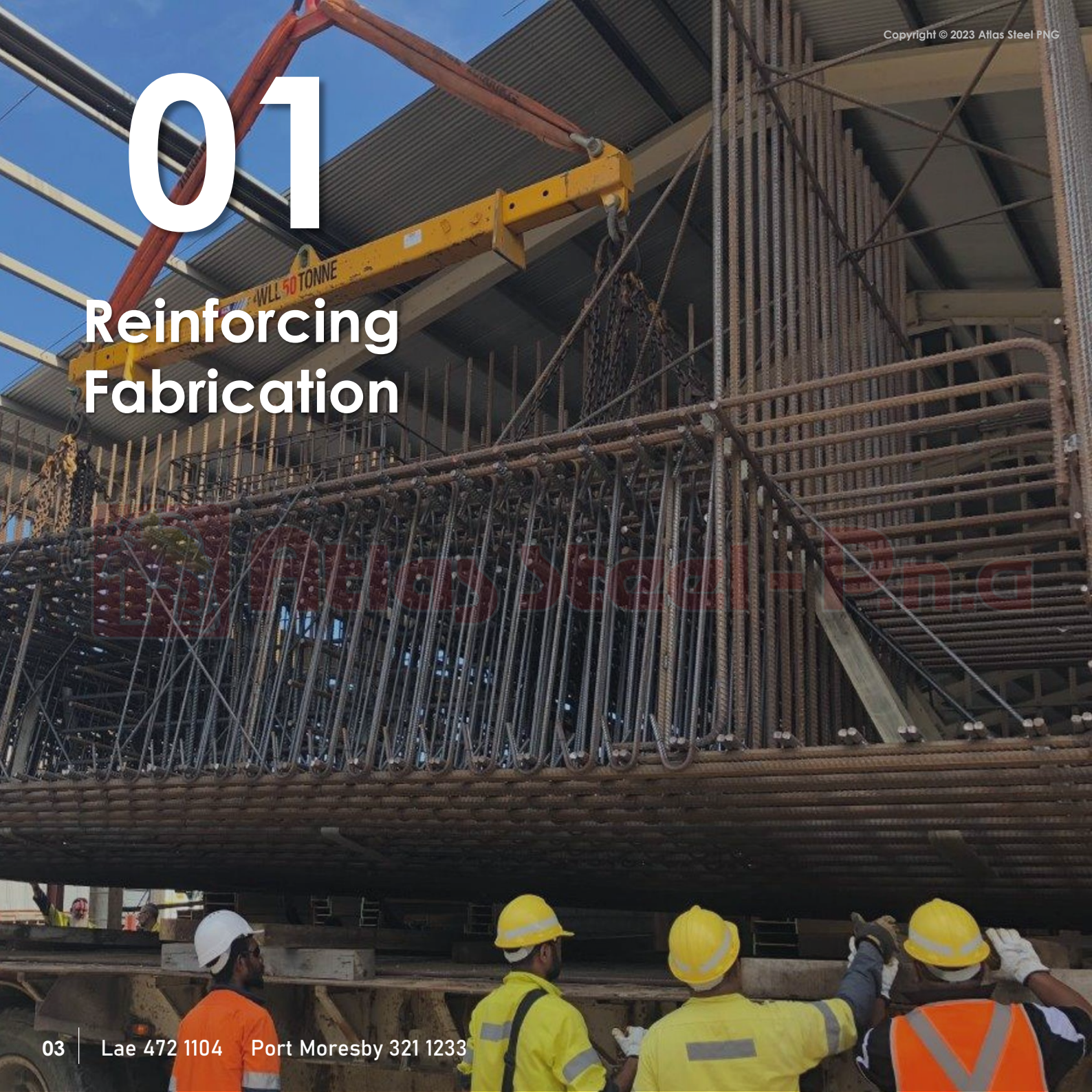
To discuss your fabrication or welding needs, contact our sales offices located in both Lae and Port Moresby.





# 01

## Reinforcing Fabrication





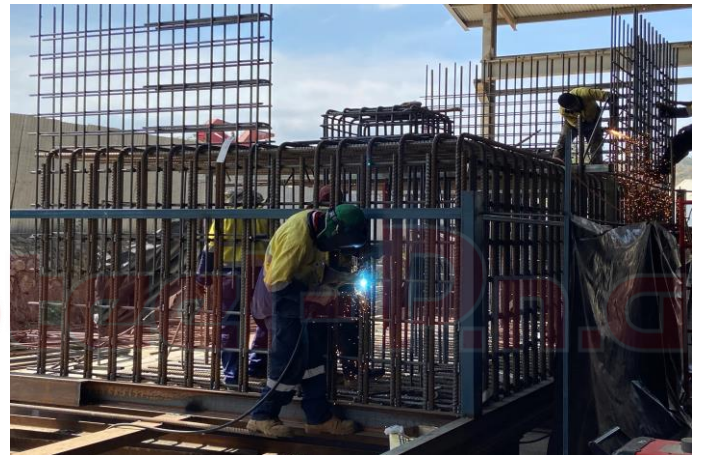
Atlas Steel PNG has taken pride in the support we give to the energy and mining sectors.

We bend, cut, tie or weld deformed bars into cage and slab reinforcement before transportation for concreting at your site.

This process saves immense amounts of time at your site. It is safe and effective, cutting down on possible site injuries and is not dependent on the weather.

We have formed structures with a completed weight of 28 Tonnes using Grade 500N bars up to 36mm diameter.

We carry the largest stocks of ACRS accredited reinforcing bars and mesh in the country.



## Major Clients









# 02

## Structural Steel Fabrication



ATLAS STEEL PNG

Steel fabrication is the process of bending, cutting, and modelling steel sections or plates to form a structure. It is a value adding process that allows raw steel sections to be formed into a structure or vessel. It is a complex process that requires specialized knowledge, skills, and resources to complete successfully.

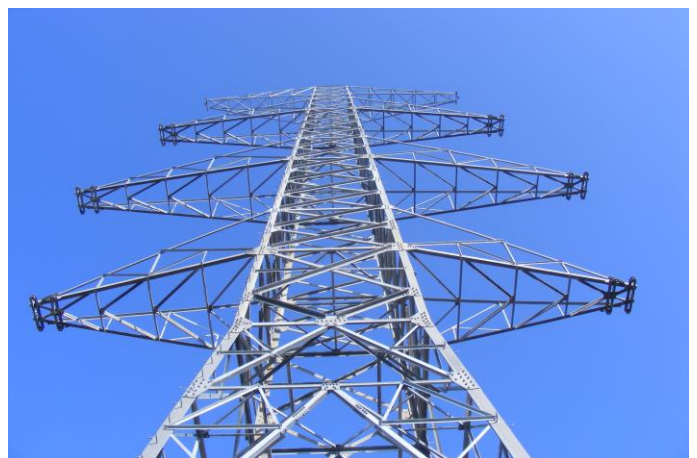


We can also fabricate a range of carbon steel pipe spooling from 50NB to 500NB, utilizing pipes from medium wall to extra heavy wall thickness and weld to ASME IX standards.



We can service the mining sector with fabrication of such structures as conveyors, hoppers chutes and mine site buildings.

For the energy sector, we can fabricate and supply transmission towers, mobile phone masts and switch yard assemblies





# 03

## Light Fabrication Works



# Atlas Steel - P.n.g

# Introduction

Light Fabrication works include operations like cutting, shaping, and assembly of components; such as house posts and balustrading. Many light fabrication items are used in Atlas Steel's demountable and modular buildings as well.

## Examples

### Stairs

Cost effective and durable using a variety of steel sections.

### Balustrading

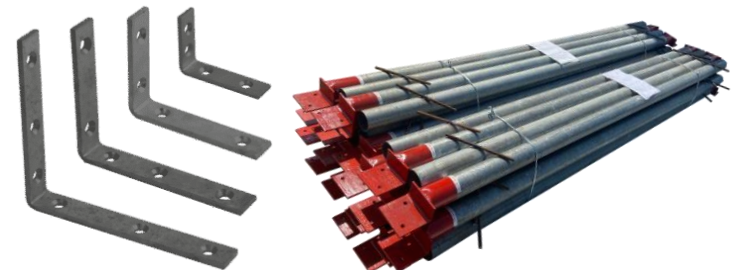
A durable, low maintenance safety option for your deck or veranda.

### Brackets

Brackets are most commonly used to connect 2 pieces of material and come in a wide range of types of shapes.

### House Posts

Our popular house stumps comprise of hot-dip galvanized posts that are welded to epoxy painted brackets and are fully compliant with PNG building codes.





# 04

## Truck Bodies & Automotive





# Introduction

Our custom truck bodies are valuable assets to many industries, from mining to utility to many other commercial applications. Investing in our truck bodies will help your business achieve its goals faster and more efficiently by allowing you to expand your operations and take on new projects or increase your project volume.

## Benefits

### Personalized service

We'll talk with you about your requirements and preferences to ensure we match you with the best truck body for your unique application.

### Customization

We can upgrade your truck body with custom features to give you the specific functionality and performance you're looking for.

### Cost Effective

Our truck bodies save you time and money, rather than importing from overseas, we can supply you an even better quality, designed and built to suit PNG conditions.

Remember, Buy PNG Made.



## Major Clients

### Ela Motors

Your First Choice

NiU FORD 





# 05

## Grit Blasting



Atlas Steel - P.N.G.

This involves forcibly propelling an abrasive material against a surface under high pressure. Blasting grades include:

### **Sa 2 – Thorough Blast Cleaning**

Sand blasting preparation, is the lowest grade in sandblasting processing. All rust, mill scale and old paint are completely removed by abrasive blasting. This is commonly called Whip Blasting.

### **Sa2.5 – Near White Blast cleaning**

In this method, all oil, grease, dirt, mill scale, rust, paint or other foreign matter have been completely removed from the surface by abrasive blasting.

### **Sa 3D – Blast Cleaning to White Metal**

The highest grade of removal of surface contamination. All visible rust, mill scale, paint and contaminants are removed, leaving the metal uniformly white or gray in appearance. This is the ultimate in blast cleaning. Use where maximum performance of protective coatings is necessary due to exceptionally severe conditions such as constant immersion in water or liquid chemicals.



Comparable to **WHITE METAL SSPC-SP5 (NACE No 1 / SA 3)**



# 06

## Surface Protection



Painting steel is not only to add color and branding but for protection. Applying the right coatings and then applying them correctly are the two most important factors to painting steel.

If the paint is not applied correctly or the incorrect coatings are chosen, then the paint will fail and expose the steel structure to harsh and damaging environmental elements causing corrosion and other damaging effects.

Alternative materials and systems can also provide satisfactory service; however, the materials and systems included in this Standard are known to perform satisfactorily when correct application methods have been followed.

We use a variety of paint systems that include Zinc Rich Primers, 2 Pack Epoxy Paints, Spraying Enamels, and special applications such as Glass Flake.

All painting works done by Atlas Steel PNG conforms to AS/NZ Standards 2312:2002.

Our team of professional painters have the tools in place to provide excellent, high-performance paint applications to steel structures.





# 07

## Security Screening



# Introduction

Atlas Steel PNG offers vehicle window security grilles for protection to vehicles in PNG. Designed for maximum strength and visibility, they are manufactured from the toughest steel to protect those travelling up and down the highways & in and around the city. These security grilles are made to stand the toughest conditions.

## Benefits

### Occupant Protection

Full coverage of all glass provides superior protection to occupants from projectiles and other risks; protecting your most valuable assets in your vehicle – people.

### Lightweight and durable

Our steel grilles can withstand any vandalism and theft that may occur in your area.

### Tough Steel

High strength steel is fabricated into your vehicle grilles. By using Atlas Steel, you can rely on years of PNG made strength.

### Removable design

Removable mounting system onto the vehicle.





# 08

## Fencing Fabrication



# Introduction

Chainmesh, Picket, Palisade and High security fencing are the 4 most popular fencing systems that Atlas Steel PNG fabricates and supplies; conforming to AS 1725/ BS 1722 or equivalent.

## Systems

### Chainmesh Fencing

This fencing offers strength, durability and affordability for small, medium or large enclosures.

### Picket Fencing

A value-for-money option for securing commercial and industrial properties as well as schools and sports complexes.

### Palisade Fencing

A highly effective option recommended for public work facilities, commercial and industrial establishments, sports facilities & defense sites.

### 358 High Security Fencing

High-tensile 358 security mesh fixed between heavy-duty steel posts to create an extremely difficult barrier to penetrate. Our top-of-the-line option used to secure airports, Embassies & diplomatic mission posts, high end accommodation, industrial sites, detention centers and prisons. We have supplied to Exxon, Total Energy and even Bomana Prison.





# 09

## Special Fencing





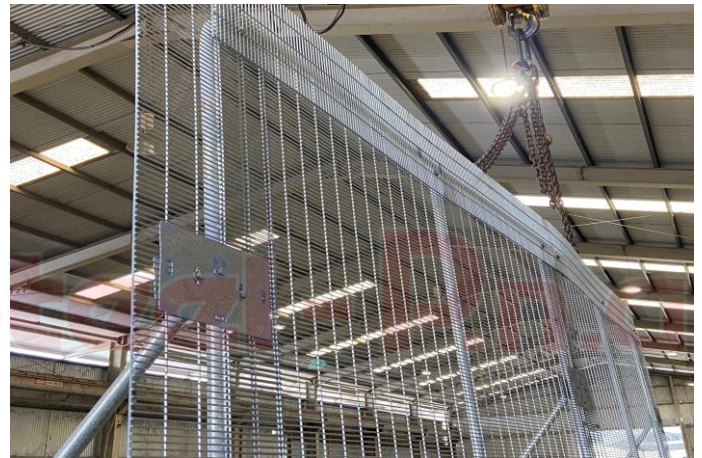
Upon request, Atlas Steel PNG can fabricate and supply custom fencing to suit your custom needs. This includes using high-tensile 358 security mesh to fabricate to your specifications.

Using 358, we are able to provide the highest level of strength and security to multinational members of the energy and petroleum industries.

Atlas Steel's 358 Fencing features a toe and finger proof, anti-pass through mesh aperture. Excellent anti-cut and anti-climb characteristics resist breaching and vandalism.

We offer functional and quality fencing options through our customization. Expertise and experience in the industry is what we pride ourselves on – together with your own input, we're able to offer amazing and unique designs that tick every box.

Atlas Steel PNG is 100% PNG Made in our state of the art facilities located in Lae and Port Moresby. We utilize only the best steel to ensure a high-quality security product.





# Health, Safety and Environmental Policy



Atlas Steel PNG believes in providing staff, clients, partners, subcontractors, suppliers and visitors with a healthy and safe environment.

## We are committed to:

- Make our workplace, processes, practices, products and services safe for health and the environment.
- Create Safe working conditions and reduce incidents, with the ultimate objective of zero workplace injuries and illness.
- Explore technologies across our operations to minimize impact on the environment.

## To meet our commitment, we:

- Give top priority to Health, Safety and the Environment (HSE) across the entire business operations and product delivery.
- Communicate, train and motivate employees to achieve our HSE objectives.
- Make our workplace free from incidents and occupational illnesses.
- Practice the principle of prevention.
- Regularly audit our workplaces.
- Manage workplace risks in accordance with PNG legislation and other requirements.

**Atlas Steel PNG** has effective systems and controls in place to ensure that our business and supply chain are not party to **Modern Slavery** and associated human rights violations.



The information contained in this document is intended solely for the use of the individual to whom it is addressed and others authorized to receive it. If you are not the intended receipt, you are hereby notified that any disclosure, copying, distribution or taking any action in reliance on the contents of this document is strictly prohibited and may be unlawful.

Atlas Steel PNG therefore does not accept liability for any errors or omissions in the contents of this document, which arise. If you have received this in error, please notify us immediately by using the contact details inside.

Copyright © 2023 Atlas Steel PNG

